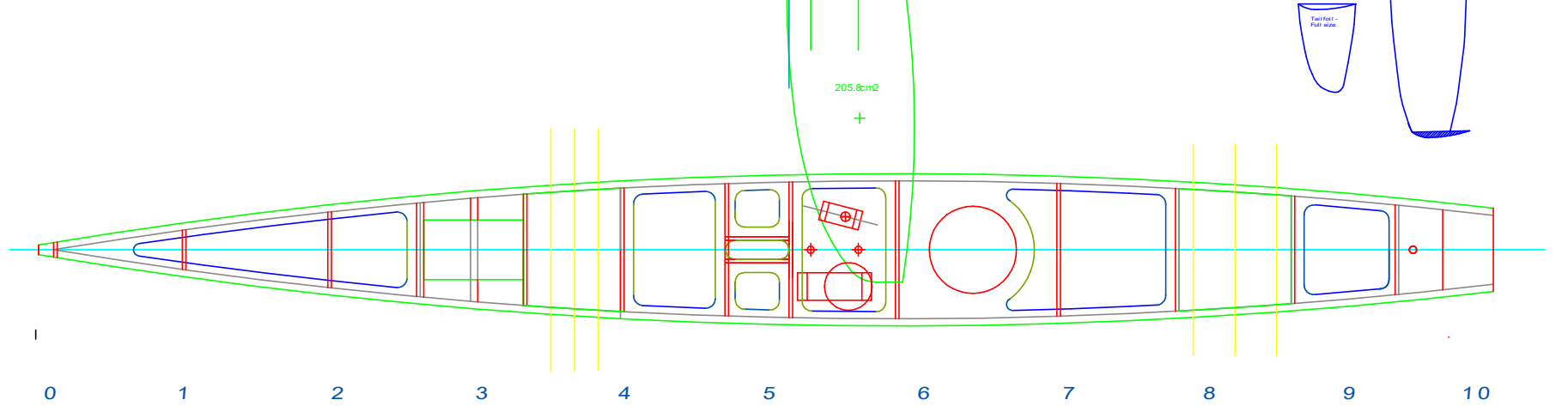
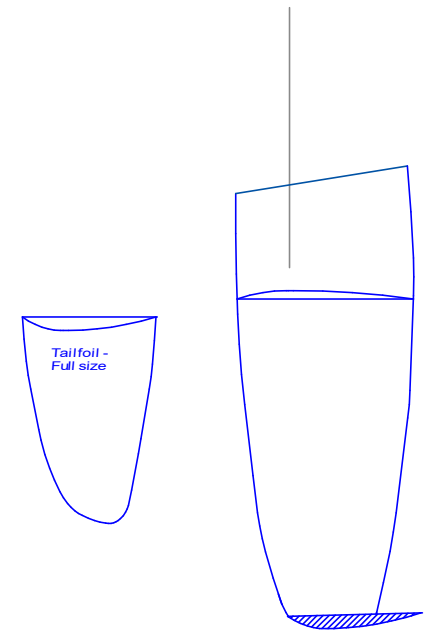
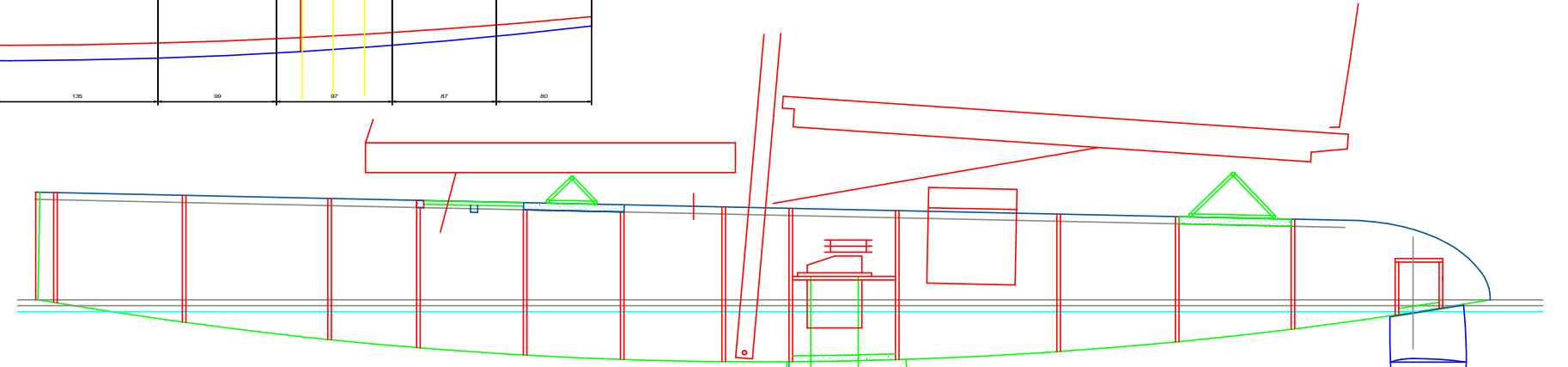
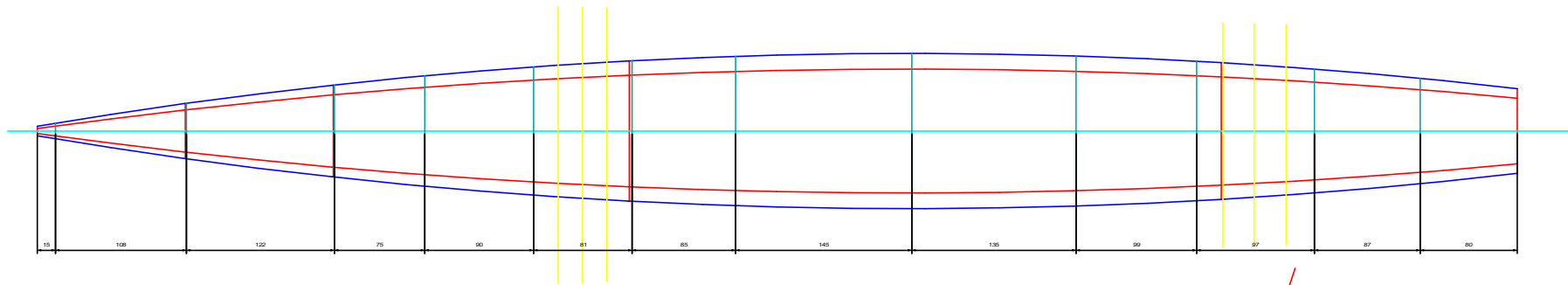
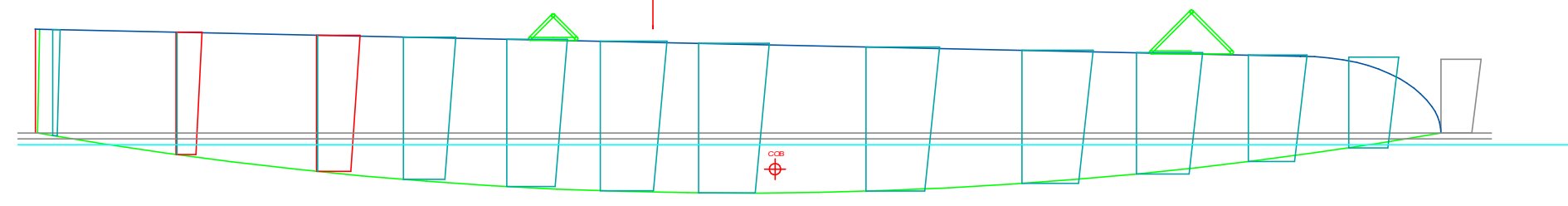
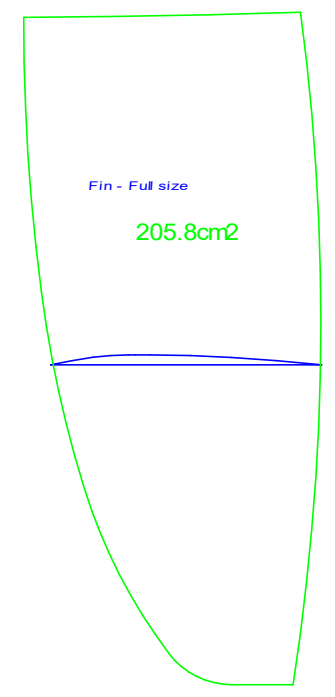


Body Sections for 10 frames

Body Sections for 12 frames



Centre Hull & RC details

Designer : Andy McCulloch
 Date : January 1994
 LOA : 1220 LWL : 1220 Max Beam : 1220
 Displacement: Recommended 6lbs - Max 7.5lbs
 © Andy McCulloch Designs 1994

Route 9
 International Mini40 Trimaran
 Centre Hull and RC installation details Sheet 1 of 2